

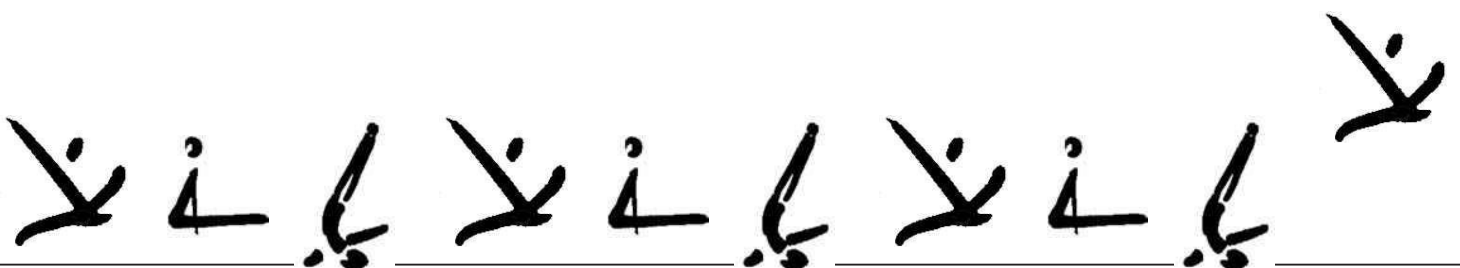
14. FRÜHLINGSMEETING ALTBÜRON

Geräteturnen

Tu K1-K4 / Ti K4

Samstag 20. April 2024

RANGLISTE Tu K1-K4 / Ti K4



Kat. 1

(Total: 44 Turner)

Rang	Ausz	Name	Vorname	JG	Verein	Reck	Boden	Ring	Sprung	Barren	Total
1	☺	Bättig	Joel	2015	Ballwil TV STV	9.30 ⁽⁶⁾	9.50 ⁽¹⁾	9.35 ⁽³⁾	9.65 ⁽¹⁾	9.35 ⁽¹⁾	47.15
2	☺	Brühlmann	Luca	2014	Zell STV	9.45 ⁽³⁾	9.10 ⁽⁷⁾	9.30 ⁽⁴⁾	9.15 ⁽¹⁷⁾	9.05 ⁽³⁾	46.05
3	☺	Knüsel	Lean	2016	Ballwil TV STV	9.40 ⁽⁴⁾	9.15 ⁽⁵⁾	9.25 ⁽⁵⁾	9.05 ⁽²¹⁾	9.00 ⁽⁴⁾	45.85
4	☺	Elmiger	Remo	2014	Hitzkirch STV	9.50 ⁽¹⁾	8.95 ⁽¹¹⁾	9.00 ⁽¹²⁾	9.65 ⁽¹⁾	8.70 ⁽¹⁴⁾	45.80
5	☺	Röllli	Lenny	2015	Altbüren STV	9.20 ⁽⁷⁾	8.90 ⁽¹²⁾	9.45 ⁽¹⁾	9.40 ⁽⁶⁾	8.80 ⁽¹¹⁾	45.75
6	☺	Fry	Silvan	2016	Buochs STV	8.95 ⁽¹¹⁾	9.15 ⁽⁵⁾	9.00 ⁽¹²⁾	9.50 ⁽⁴⁾	8.90 ⁽⁸⁾	45.50
7	☺	Hänni	Marino	2016	Ballwil TV STV	8.80 ⁽¹⁵⁾	9.20 ⁽³⁾	9.40 ⁽²⁾	9.40 ⁽⁶⁾	8.60 ⁽¹⁷⁾	45.40
8	☺	Gantenbein	Nio	2016	Ballwil TV STV	9.50 ⁽¹⁾	8.50 ⁽²⁵⁾	9.10 ⁽⁸⁾	9.10 ⁽¹⁹⁾	8.85 ⁽¹⁰⁾	45.05
9	☺	Wüest	Henry	2014	Ettiswil STV	8.65 ⁽²⁴⁾	9.05 ⁽⁹⁾	8.50 ⁽³⁰⁾	9.55 ⁽³⁾	8.95 ⁽⁶⁾	44.70
10	☺	Meyer	Remo	2015	Grosswangen TV	8.75 ⁽¹⁸⁾	9.10 ⁽⁷⁾	9.00 ⁽¹²⁾	8.75 ⁽³⁷⁾	8.90 ⁽⁸⁾	44.50
11	☺	Irniger	Matteo	2014	Hitzkirch STV	9.05 ⁽⁸⁾	9.35 ⁽²⁾	8.80 ⁽²²⁾	9.30 ⁽¹⁰⁾	7.95 ⁽³⁵⁾	44.45
12	☺	Fischer	Samuel	2014	Triengen TV	8.65 ⁽²⁴⁾	8.70 ⁽¹⁸⁾	9.05 ⁽¹⁰⁾	9.20 ⁽¹⁵⁾	8.65 ⁽¹⁵⁾	44.25
13	☺	Hepp	Timo	2017	Luzern BTV STV	8.95 ⁽¹¹⁾	8.30 ⁽³³⁾	8.90 ⁽¹⁶⁾	9.05 ⁽²¹⁾	8.95 ⁽⁶⁾	44.15
14	☺	Schmidli	Timeo	2015	Luzern BTV STV	8.65 ⁽²⁴⁾	8.80 ⁽¹⁵⁾	9.05 ⁽¹⁰⁾	9.40 ⁽⁶⁾	8.15 ⁽²⁹⁾	44.05
14	☺	Tschopp	Tobias	2015	Sursee TV STV	8.75 ⁽¹⁸⁾	8.65 ⁽²⁰⁾	8.85 ⁽²⁰⁾	9.25 ⁽¹¹⁾	8.55 ⁽¹⁹⁾	44.05
16	☺	Husmann	Ben	2014	Malters STV	9.35 ⁽⁵⁾	8.75 ⁽¹⁷⁾	8.55 ⁽²⁷⁾	8.90 ⁽³¹⁾	8.45 ⁽²¹⁾	44.00
17	☺	Infanger	Fabio	2014	Ballwil TV STV	9.05 ⁽⁸⁾	8.40 ⁽³¹⁾	8.30 ⁽³⁶⁾	9.45 ⁽⁵⁾	8.65 ⁽¹⁵⁾	43.85
18	☺	Doppmann	Luis	2015	Buochs STV	8.90 ⁽¹⁴⁾	8.90 ⁽¹²⁾	9.25 ⁽⁵⁾	8.85 ⁽³²⁾	7.85 ⁽⁴⁰⁾	43.75
19		Vogel	Andrin	2014	Malters STV	9.00 ⁽¹⁰⁾	8.45 ⁽²⁸⁾	8.55 ⁽²⁷⁾	8.60 ⁽⁴¹⁾	9.00 ⁽⁴⁾	43.60
20		Casadei	Angelo	2016	Buochs STV	8.40 ⁽³¹⁾	8.55 ⁽²³⁾	9.20 ⁽⁷⁾	9.25 ⁽¹¹⁾	8.10 ⁽³³⁾	43.50
21		Meyer	Fynn	2015	Zell STV	8.95 ⁽¹¹⁾	8.60 ⁽²²⁾	8.95 ⁽¹⁵⁾	9.05 ⁽²¹⁾	7.90 ⁽³⁶⁾	43.45
22		Oberson	Patrick	2015	Sursee TV STV	8.75 ⁽¹⁸⁾	9.00 ⁽¹⁰⁾	8.40 ⁽³³⁾	8.65 ⁽³⁹⁾	8.60 ⁽¹⁷⁾	43.40
23		Notz	Florian	2014	Ettiswil STV	8.55 ⁽²⁸⁾	8.55 ⁽²³⁾	8.35 ⁽³⁵⁾	9.10 ⁽¹⁹⁾	8.75 ⁽¹²⁾	43.30
23		Thali	Jonas	2014	Hitzkirch STV	8.60 ⁽²⁷⁾	8.50 ⁽²⁵⁾	8.90 ⁽¹⁶⁾	9.15 ⁽¹⁷⁾	8.15 ⁽²⁹⁾	43.30
25		Bühlmann	Nael	2016	Triengen TV	8.50 ⁽³⁰⁾	7.90 ⁽⁴¹⁾	9.10 ⁽⁸⁾	9.35 ⁽⁹⁾	8.40 ⁽²³⁾	43.25
26		Germann	Max	2016	Grosswangen TV	8.40 ⁽³¹⁾	8.85 ⁽¹⁴⁾	8.80 ⁽²²⁾	8.95 ⁽²⁶⁾	8.20 ⁽²⁶⁾	43.20
27		Portmann	Tim	2015	Ballwil TV STV	8.70 ⁽²¹⁾	8.35 ⁽³²⁾	8.85 ⁽²⁰⁾	8.85 ⁽³²⁾	8.40 ⁽²³⁾	43.15
27		Amstutz	Lian	2016	Buochs STV	8.30 ⁽³⁶⁾	8.30 ⁽³³⁾	8.90 ⁽¹⁶⁾	9.25 ⁽¹¹⁾	8.40 ⁽²³⁾	43.15
29		Küchler	Leon	2014	Buchrain STV	8.40 ⁽³¹⁾	8.65 ⁽²⁰⁾	8.45 ⁽³²⁾	9.05 ⁽²¹⁾	8.45 ⁽²¹⁾	43.00
30		Weibel	Janis	2014	Ettiswil STV	8.70 ⁽²¹⁾	8.80 ⁽¹⁵⁾	8.05 ⁽³⁹⁾	9.25 ⁽¹¹⁾	8.05 ⁽³⁴⁾	42.85
31		Ahmetaj	Diart	2014	Sursee TV STV	8.15 ⁽³⁸⁾	8.30 ⁽³³⁾	8.65 ⁽²⁴⁾	8.95 ⁽²⁶⁾	8.50 ⁽²⁰⁾	42.55
32		Christen	Flynn	2015	Luzern BTV STV	8.70 ⁽²¹⁾	8.30 ⁽³³⁾	8.20 ⁽³⁸⁾	9.05 ⁽²¹⁾	8.15 ⁽²⁹⁾	42.40
33		Portmann	Felix	2014	Triengen TV	8.80 ⁽¹⁵⁾	7.90 ⁽⁴¹⁾	8.50 ⁽³⁰⁾	8.95 ⁽²⁶⁾	8.20 ⁽²⁶⁾	42.35
34		Röllli	Joel	2016	Ettiswil STV	8.55 ⁽²⁸⁾	8.45 ⁽²⁸⁾	8.55 ⁽²⁷⁾	8.75 ⁽³⁷⁾	7.90 ⁽³⁶⁾	42.20
35		Nyffeler	Aaron	2017	Grosswangen TV	8.40 ⁽³¹⁾	8.45 ⁽²⁸⁾	7.85 ⁽⁴⁰⁾	8.80 ⁽³⁵⁾	8.20 ⁽²⁶⁾	41.70
36		Nyffeler	Flurin	2015	Grosswangen TV	8.40 ⁽³¹⁾	9.20 ⁽³⁾	8.40 ⁽³³⁾	8.95 ⁽²⁶⁾	6.60 ⁽⁴⁴⁾	41.55
37		Salzmann	Janosch	2015	Ballwil TV STV	8.30 ⁽³⁶⁾	7.30 ⁽⁴³⁾	8.30 ⁽³⁶⁾	8.85 ⁽³²⁾	8.75 ⁽¹²⁾	41.50
38		Böhm	Juri	2016	Ballwil TV STV	8.80 ⁽¹⁵⁾	8.15 ⁽³⁹⁾	8.65 ⁽²⁴⁾	7.85 ⁽⁴⁴⁾	7.90 ⁽³⁶⁾	41.35
38		Kirchhofer	Nino	2015	Büren TV STV	7.40 ⁽⁴⁴⁾	8.70 ⁽¹⁸⁾	8.60 ⁽²⁶⁾	8.80 ⁽³⁵⁾	7.85 ⁽⁴⁰⁾	41.35
40		Bättig	Matteo	2016	Altbüren STV	7.85 ⁽⁴⁰⁾	8.20 ⁽³⁸⁾	8.90 ⁽¹⁶⁾	8.45 ⁽⁴³⁾	7.90 ⁽³⁶⁾	41.30
41		Irniger	David	2015	Hitzkirch STV	7.65 ⁽⁴³⁾	7.30 ⁽⁴³⁾	7.60 ⁽⁴²⁾	9.20 ⁽¹⁵⁾	9.20 ⁽²⁾	40.95
42		Hartmann	Mael	2016	Hitzkirch STV	8.10 ⁽³⁹⁾	8.05 ⁽⁴⁰⁾	7.75 ⁽⁴¹⁾	8.50 ⁽⁴²⁾	8.15 ⁽²⁹⁾	40.55
43		Thali	Till	2016	Hitzkirch STV	7.80 ⁽⁴²⁾	8.25 ⁽³⁷⁾	7.45 ⁽⁴³⁾	8.95 ⁽²⁶⁾	7.80 ⁽⁴²⁾	40.25
44		Cakolli	Arion	2017	Büren TV STV	7.85 ⁽⁴⁰⁾	8.50 ⁽²⁵⁾	7.40 ⁽⁴⁴⁾	8.65 ⁽³⁹⁾	7.10 ⁽⁴³⁾	39.50

Hauptsponsor:







Kat. 2

(Total: 45 Turner)

Rang	Ausz	Name	Vorname	JG	Verein	Reck	Boden	Ring	Sprung	Barren	Total
1	☺	Scherer	Joel	2014	Rickenbach TV STV	9.15 ⁽²⁾	9.45 ⁽¹⁾	9.55 ⁽¹⁾	9.20 ⁽³⁾	9.60 ⁽¹⁾	46.95
2	☺	Duss	John	2014	Buchrain STV	9.40 ⁽¹⁾	8.95 ⁽⁵⁾	9.45 ⁽²⁾	9.15 ⁽⁴⁾	9.40 ⁽²⁾	46.35
3	☺	von Moos	Laurin	2013	Hitzkirch STV	9.00 ⁽⁷⁾	8.75 ⁽¹¹⁾	9.25 ⁽⁷⁾	9.25 ⁽¹⁾	8.75 ⁽¹¹⁾	45.00
4	☺	Sidler	Lukas	2013	Luzern BTV STV	9.05 ⁽⁴⁾	8.80 ⁽¹⁰⁾	9.30 ⁽⁴⁾	8.40 ⁽²¹⁾	8.95 ⁽⁷⁾	44.50
5	☺	Rüegg	Jon	2014	Sarnen STV	8.85 ⁽¹⁵⁾	9.10 ⁽²⁾	9.30 ⁽⁴⁾	8.45 ⁽²⁰⁾	8.70 ⁽¹²⁾	44.40
5	☺	Eichenberger	Andres	2014	Zell STV	9.05 ⁽⁴⁾	8.70 ⁽¹²⁾	9.15 ⁽⁹⁾	8.55 ⁽¹⁸⁾	8.95 ⁽⁷⁾	44.40
7	☺	Mattli	Tobias	2013	Zell STV	8.75 ⁽¹⁹⁾	9.10 ⁽²⁾	9.25 ⁽⁷⁾	8.80 ⁽⁷⁾	8.20 ⁽²⁷⁾	44.10
7	☺	Irniger	Lukas	2012	Hitzkirch STV	9.00 ⁽⁷⁾	8.30 ⁽²⁷⁾	8.85 ⁽²⁰⁾	8.80 ⁽⁷⁾	9.15 ⁽³⁾	44.10
9	☺	Freimann	Mauro	2013	Sursee TV STV	9.10 ⁽³⁾	8.35 ⁽²⁴⁾	9.15 ⁽⁹⁾	8.55 ⁽¹⁸⁾	8.90 ⁽⁹⁾	44.05
10	☺	Kunaica	Filip	2014	Buchrain STV	8.50 ⁽²⁶⁾	8.20 ⁽³⁰⁾	9.30 ⁽⁴⁾	8.70 ⁽¹⁰⁾	9.15 ⁽³⁾	43.85
10	☺	Anghern	Cederic	2014	Sarnen STV	8.50 ⁽²⁶⁾	8.45 ⁽²¹⁾	9.35 ⁽³⁾	8.85 ⁽⁶⁾	8.70 ⁽¹²⁾	43.85
12	☺	Sommer	Phil	2015	Buchrain STV	8.90 ⁽¹³⁾	9.05 ⁽⁴⁾	9.15 ⁽⁹⁾	8.80 ⁽⁷⁾	7.85 ⁽³⁷⁾	43.75
12	☺	Breitenmoser	Jon	2016	Luzern BTV STV	9.00 ⁽⁷⁾	8.60 ⁽¹⁶⁾	8.95 ⁽¹⁸⁾	8.60 ⁽¹⁴⁾	8.60 ⁽¹⁵⁾	43.75
14	☺	Eiholzer	Nino	2014	Ettiswil STV	8.65 ⁽²¹⁾	8.70 ⁽¹²⁾	9.10 ⁽¹⁴⁾	8.60 ⁽¹⁴⁾	8.50 ⁽²⁰⁾	43.55
15	☺	Fluder	Silvio	2013	Malters STV	8.60 ⁽²³⁾	8.65 ⁽¹⁵⁾	8.60 ⁽³²⁾	8.60 ⁽¹⁴⁾	9.05 ⁽⁵⁾	43.50
16	☺	Schüpfer	Ivo	2014	Rickenbach TV STV	8.80 ⁽¹⁷⁾	8.85 ⁽⁹⁾	8.80 ⁽²²⁾	8.35 ⁽²³⁾	8.50 ⁽²⁰⁾	43.30
17	☺	Haas	Louis	2013	Zell STV	9.00 ⁽⁷⁾	8.55 ⁽¹⁹⁾	9.15 ⁽⁹⁾	8.70 ⁽¹⁰⁾	7.75 ⁽³⁹⁾	43.15
18	☺	Huber	Robin	2014	Sursee TV STV	8.90 ⁽¹³⁾	8.20 ⁽³⁰⁾	9.15 ⁽⁹⁾	7.75 ⁽³⁷⁾	9.05 ⁽⁵⁾	43.05
19		Galliker	Leo	2015	Buochs STV	9.00 ⁽⁷⁾	8.35 ⁽²⁴⁾	8.85 ⁽²⁰⁾	8.20 ⁽³⁰⁾	8.55 ⁽¹⁸⁾	42.95
20		Marberger	Janis	2014	Grosswangen TV	8.30 ⁽³³⁾	8.60 ⁽¹⁶⁾	9.00 ⁽¹⁶⁾	8.10 ⁽³²⁾	8.80 ⁽¹⁰⁾	42.80
21		Hegglin	Nino	2014	Hitzkirch STV	8.50 ⁽²⁶⁾	8.60 ⁽¹⁶⁾	8.80 ⁽²²⁾	8.65 ⁽¹²⁾	8.10 ⁽³¹⁾	42.65
21		Stofer	Juri	2013	Emmenstrand STV	8.50 ⁽²⁶⁾	8.95 ⁽⁵⁾	8.35 ⁽³⁷⁾	8.25 ⁽²⁹⁾	8.60 ⁽¹⁵⁾	42.65
23		Kaserer	Nino	2016	Sarnen STV	7.75 ⁽⁴¹⁾	8.95 ⁽⁵⁾	8.95 ⁽¹⁸⁾	8.95 ⁽⁵⁾	7.90 ⁽³⁶⁾	42.50
24		Imfeld	Leano	2014	Sarnen STV	9.00 ⁽⁷⁾	8.40 ⁽²²⁾	8.55 ⁽³³⁾	8.05 ⁽³⁵⁾	8.35 ⁽²³⁾	42.35
24		Zbinden	Joel	2013	Zell STV	8.80 ⁽¹⁷⁾	8.50 ⁽²⁰⁾	9.05 ⁽¹⁵⁾	8.35 ⁽²³⁾	7.65 ⁽⁴¹⁾	42.35
26		Fuchs	Thom	2014	Malters STV	7.95 ⁽³⁹⁾	8.20 ⁽³⁰⁾	9.00 ⁽¹⁶⁾	8.60 ⁽¹⁴⁾	8.55 ⁽¹⁸⁾	42.30
27		Bucher	Moritz	2012	Malters STV	8.50 ⁽²⁶⁾	7.90 ⁽³⁷⁾	8.80 ⁽²²⁾	8.40 ⁽²¹⁾	8.60 ⁽¹⁵⁾	42.20
27		Broch	Nick	2013	Ettiswil STV	9.05 ⁽⁴⁾	8.15 ⁽³³⁾	8.70 ⁽²⁶⁾	8.10 ⁽³²⁾	8.20 ⁽²⁷⁾	42.20
29		Borsotti	Elin	2012	Emmenstrand STV	8.85 ⁽¹⁵⁾	7.20 ⁽⁴¹⁾	8.80 ⁽²²⁾	8.65 ⁽¹²⁾	8.65 ⁽¹⁴⁾	42.15
30		Pauwels	Linus	2013	Emmenstrand STV	8.45 ⁽³¹⁾	8.40 ⁽²²⁾	8.65 ⁽³⁰⁾	8.30 ⁽²⁸⁾	8.30 ⁽²⁵⁾	42.10
30		Ivanov	Darien	2012	Buchrain STV	8.40 ⁽³²⁾	8.70 ⁽¹²⁾	8.70 ⁽²⁶⁾	8.10 ⁽³²⁾	8.20 ⁽²⁷⁾	42.10
32		Meyer	Lino	2013	Hitzkirch STV	8.65 ⁽²¹⁾	8.30 ⁽²⁷⁾	8.65 ⁽³⁰⁾	8.35 ⁽²³⁾	8.10 ⁽³¹⁾	42.05
33		Vogel	Julian	2014	Malters STV	8.20 ⁽³⁴⁾	8.90 ⁽⁸⁾	8.40 ⁽³⁵⁾	8.35 ⁽²³⁾	8.10 ⁽³¹⁾	41.95
34		Bucheli	Joshua	2014	Ettiswil STV	8.75 ⁽¹⁹⁾	7.95 ⁽³⁵⁾	8.25 ⁽³⁹⁾	8.20 ⁽³⁰⁾	8.10 ⁽³¹⁾	41.25
35		Garic	Ivano	2013	Emmenstrand STV	7.85 ⁽⁴⁰⁾	6.95 ⁽⁴³⁾	8.45 ⁽³⁴⁾	9.25 ⁽¹⁾	8.45 ⁽²²⁾	40.95
36		Willi	Rafael	2013	Ettiswil STV	8.60 ⁽²³⁾	7.95 ⁽³⁵⁾	8.30 ⁽³⁸⁾	7.55 ⁽³⁸⁾	8.05 ⁽³⁵⁾	40.45
37		Sager	Jaro	2014	Emmenstrand STV	8.05 ⁽³⁷⁾	8.00 ⁽³⁴⁾	8.40 ⁽³⁵⁾	7.80 ⁽³⁶⁾	8.15 ⁽³⁰⁾	40.40
38		Meyer	Vinzenz	2013	Grosswangen TV	7.70 ⁽⁴²⁾	8.35 ⁽²⁴⁾	8.70 ⁽²⁶⁾	7.25 ⁽⁴¹⁾	8.25 ⁽²⁶⁾	40.25
39		Kathriner	Levin	2014	Kerns TV STV	8.15 ⁽³⁵⁾	7.50 ⁽³⁸⁾	7.65 ⁽⁴⁴⁾	8.35 ⁽²³⁾	7.40 ⁽⁴⁵⁾	39.05
40		Burri	Phil	2014	Grosswangen TV	8.00 ⁽³⁸⁾	7.35 ⁽³⁹⁾	8.70 ⁽²⁶⁾	6.50 ⁽⁴⁵⁾	8.35 ⁽²³⁾	38.90
41		Brun	Leon	2013	Malters STV	8.55 ⁽²⁵⁾	7.25 ⁽⁴⁰⁾	7.95 ⁽⁴²⁾	6.70 ⁽⁴³⁾	7.65 ⁽⁴¹⁾	38.10
42		Kirchhofer	Lio	2016	Büron TV STV	8.10 ⁽³⁶⁾	7.05 ⁽⁴²⁾	8.20 ⁽⁴⁰⁾	7.00 ⁽⁴²⁾	7.55 ⁽⁴⁴⁾	37.90
43		Bryan	Luke	2013	Malters STV	7.05 ⁽⁴⁵⁾	8.30 ⁽²⁷⁾	7.95 ⁽⁴²⁾	6.70 ⁽⁴³⁾	7.80 ⁽³⁸⁾	37.80
44		Lütolf	Ari	2014	Sursee TV STV	7.60 ⁽⁴³⁾	6.60 ⁽⁴⁵⁾	8.10 ⁽⁴¹⁾	7.40 ⁽³⁹⁾	7.70 ⁽⁴⁰⁾	37.40
45		Zraggen	Jesse	2015	Büron TV STV	7.50 ⁽⁴⁴⁾	6.90 ⁽⁴⁴⁾	7.20 ⁽⁴⁵⁾	7.35 ⁽⁴⁰⁾	7.60 ⁽⁴³⁾	36.55

Hauptsponsor:



Sportfonds LU/OW/NW

Kat. 3

(Total: 53 Turner)

Rang	Auszn	Name	Vorname	JG	Verein	Reck	Boden	Ring	Sprung	Barren	Total
1	☺	Pira	Amaury	2012	Luzern BTV STV	9.60 ⁽³⁾	9.35 ⁽³⁾	9.40 ⁽⁶⁾	8.90 ⁽⁷⁾	9.45 ⁽²⁾	46.70
2	☺	Estermann	Kevin	2013	Rickenbach TV STV	9.70 ⁽¹⁾	9.00 ⁽¹⁴⁾	9.40 ⁽⁶⁾	9.15 ⁽²⁾	9.20 ⁽⁵⁾	46.45
3	☺	Krummenacher	Morris	2011	Buochs STV	9.40 ⁽⁴⁾	9.20 ⁽¹⁰⁾	9.70 ⁽¹⁾	8.80 ⁽¹⁴⁾	9.15 ⁽⁸⁾	46.25
4	☺	Zehnder	Miles	2013	Luzern BTV STV	9.10 ⁽¹²⁾	9.30 ⁽⁵⁾	9.40 ⁽⁶⁾	8.80 ⁽¹⁴⁾	9.20 ⁽⁵⁾	45.80
4	☺	von Wartburg	Jona	2013	Luzern BTV STV	9.25 ⁽⁵⁾	9.70 ⁽¹⁾	8.95 ⁽²⁴⁾	8.35 ⁽⁴¹⁾	9.55 ⁽¹⁾	45.80
6	☺	Akermann	Magnus	2013	Rickenbach TV STV	9.10 ⁽¹²⁾	9.25 ⁽⁸⁾	9.20 ⁽¹²⁾	9.10 ⁽⁴⁾	9.10 ⁽¹⁰⁾	45.75
7	☺	Casadei	Federico	2012	Buochs STV	9.65 ⁽²⁾	8.90 ⁽²⁰⁾	9.10 ⁽¹⁶⁾	8.90 ⁽⁷⁾	8.80 ⁽¹⁹⁾	45.35
8	☺	Ballmann	Nael	2013	Rickenbach TV STV	9.15 ⁽¹⁰⁾	9.50 ⁽²⁾	9.35 ⁽⁹⁾	8.75 ⁽²⁰⁾	8.50 ⁽³⁰⁾	45.25
9	☺	Rüttimann	David	2010	Ballwil TV STV	9.20 ⁽⁷⁾	9.10 ⁽¹²⁾	8.95 ⁽²⁴⁾	8.55 ⁽³¹⁾	9.25 ⁽⁴⁾	45.05
10	☺	Wey	Luis	2010	Buchrain STV	8.60 ⁽³⁴⁾	9.25 ⁽⁸⁾	9.10 ⁽¹⁶⁾	9.20 ⁽¹⁾	8.85 ⁽¹⁴⁾	45.00
10	☺	Solenthaler	Tim	2011	Altbüren STV	8.95 ⁽²⁰⁾	9.30 ⁽⁵⁾	9.20 ⁽¹²⁾	9.00 ⁽⁶⁾	8.55 ⁽²⁷⁾	45.00
12	☺	Grannesberger	Luzian	2012	Triengen TV	9.05 ⁽¹⁵⁾	8.85 ⁽²²⁾	8.55 ⁽³⁷⁾	9.15 ⁽²⁾	9.30 ⁽³⁾	44.90
12	☺	Röthlin	Samuel	2013	Kerns TV STV	8.80 ⁽²⁸⁾	9.20 ⁽¹⁰⁾	9.25 ⁽¹⁰⁾	8.65 ⁽²³⁾	9.00 ⁽¹¹⁾	44.90
14	☺	Stirnimann	Dario	2011	Triengen TV	9.10 ⁽¹²⁾	9.35 ⁽³⁾	9.55 ⁽²⁾	8.50 ⁽³⁴⁾	8.30 ⁽³⁴⁾	44.80
15	☺	Dompert	Max	2015	Luzern BTV STV	9.20 ⁽⁷⁾	8.85 ⁽²²⁾	9.15 ⁽¹⁵⁾	8.35 ⁽⁴¹⁾	9.15 ⁽⁸⁾	44.70
16	☺	Fischer	Iven	2011	Grosswangen TV	8.60 ⁽³⁴⁾	8.85 ⁽²²⁾	9.45 ⁽⁴⁾	8.85 ⁽¹⁰⁾	8.75 ⁽²²⁾	44.50
17	☺	Pauwels	Finn	2011	Emmenstrand STV	8.80 ⁽²⁸⁾	8.90 ⁽²⁰⁾	9.45 ⁽⁴⁾	8.60 ⁽²⁶⁾	8.65 ⁽²⁵⁾	44.40
18	☺	Lazarevic	Levin	2011	Dagmersellen TV AKTIVE	8.60 ⁽³⁴⁾	9.30 ⁽⁵⁾	9.00 ⁽²¹⁾	8.80 ⁽¹⁴⁾	8.65 ⁽²⁵⁾	44.35
18	☺	Stadelmann	Levi	2011	Ballwil TV STV	9.00 ⁽¹⁶⁾	8.65 ⁽³²⁾	9.10 ⁽¹⁶⁾	8.65 ⁽²³⁾	8.95 ⁽¹²⁾	44.35
18	☺	Studer	Gabriel	2014	Luzern BTV STV	9.20 ⁽⁷⁾	9.00 ⁽¹⁴⁾	8.50 ⁽⁴⁰⁾	8.45 ⁽³⁶⁾	9.20 ⁽⁵⁾	44.35
21	☺	Sidler	Dario	2013	Luzern BTV STV	8.90 ⁽²²⁾	8.75 ⁽²⁷⁾	9.00 ⁽²¹⁾	8.80 ⁽¹⁴⁾	8.75 ⁽²²⁾	44.20
22	☺	Bühlmann	Yaro	2012	Triengen TV	8.65 ⁽³³⁾	9.00 ⁽¹⁴⁾	8.70 ⁽³⁴⁾	8.85 ⁽¹⁰⁾	8.95 ⁽¹²⁾	44.15
23		Bucher	Linus	2012	Malters STV	9.15 ⁽¹⁰⁾	8.75 ⁽²⁷⁾	8.85 ⁽²⁷⁾	8.65 ⁽²³⁾	8.55 ⁽²⁷⁾	43.95
23		Fluder	Jan	2011	Malters STV	8.90 ⁽²²⁾	9.10 ⁽¹²⁾	8.80 ⁽³²⁾	8.30 ⁽⁴⁷⁾	8.85 ⁽¹⁴⁾	43.95
25		Bättig	Leon Elias	2012	Altbüren STV	8.45 ⁽⁴²⁾	8.75 ⁽²⁷⁾	9.55 ⁽²⁾	8.85 ⁽¹⁰⁾	8.25 ⁽³⁷⁾	43.85
26		Steiger	Ben	2010	Grosswangen TV	8.25 ⁽⁴⁷⁾	8.85 ⁽²²⁾	9.05 ⁽¹⁹⁾	8.80 ⁽¹⁴⁾	8.80 ⁽¹⁹⁾	43.75
27		Regli	Louis	2012	Buochs STV	9.25 ⁽⁵⁾	8.40 ⁽⁴¹⁾	8.95 ⁽²⁴⁾	8.75 ⁽²⁰⁾	8.30 ⁽³⁴⁾	43.65
28		Weis	Leon	2012	Kerns TV STV	9.00 ⁽¹⁶⁾	8.65 ⁽³²⁾	9.25 ⁽¹⁰⁾	8.85 ⁽¹⁰⁾	7.85 ⁽⁴⁸⁾	43.60
28		Lauberijsen	Sebastian	2014	Malters STV	8.60 ⁽³⁴⁾	8.70 ⁽³⁰⁾	9.05 ⁽¹⁹⁾	8.45 ⁽³⁶⁾	8.80 ⁽¹⁹⁾	43.60
30		Müller	Joel	2012	Triengen TV	9.00 ⁽¹⁶⁾	9.00 ⁽¹⁴⁾	8.30 ⁽⁴⁶⁾	8.75 ⁽²⁰⁾	8.50 ⁽³⁰⁾	43.55
31		Odermatt	Linus	2012	Ballwil TV STV	8.90 ⁽²²⁾	8.55 ⁽³⁷⁾	8.85 ⁽²⁷⁾	8.35 ⁽⁴¹⁾	8.85 ⁽¹⁴⁾	43.50
32		Huber	Luc	2011	Triengen TV	8.85 ⁽²⁷⁾	8.35 ⁽⁴³⁾	9.20 ⁽¹²⁾	8.60 ⁽²⁶⁾	8.15 ⁽⁴⁰⁾	43.15
33		Diehl	Jovin	2014	Emmenstrand STV	9.00 ⁽¹⁶⁾	8.80 ⁽²⁶⁾	7.90 ⁽⁵²⁾	8.50 ⁽³⁴⁾	8.70 ⁽²⁴⁾	42.90
33		Korner	Kilian	2010	Ettiswil STV	8.95 ⁽²⁰⁾	8.65 ⁽³²⁾	8.60 ⁽³⁵⁾	8.55 ⁽³¹⁾	8.15 ⁽⁴⁰⁾	42.90
35		Rosenberg	Remo	2012	Grosswangen TV	8.90 ⁽²²⁾	8.35 ⁽⁴³⁾	8.25 ⁽⁴⁸⁾	8.80 ⁽¹⁴⁾	8.55 ⁽²⁷⁾	42.85
36		Eiholzer	Lars	2012	Ettiswil STV	8.05 ⁽⁵¹⁾	8.95 ⁽¹⁹⁾	9.00 ⁽²¹⁾	9.10 ⁽⁴⁾	7.60 ⁽⁵¹⁾	42.70
37		Bucher	Louis	2011	Malters STV	8.90 ⁽²²⁾	8.25 ⁽⁴⁶⁾	8.55 ⁽³⁷⁾	8.60 ⁽²⁶⁾	8.35 ⁽³³⁾	42.65
37		Brühlmann	Timo	2010	Ettiswil STV	8.80 ⁽²⁸⁾	8.55 ⁽³⁷⁾	8.85 ⁽²⁷⁾	8.90 ⁽⁷⁾	7.55 ⁽⁵²⁾	42.65
39		Michel	Damian	2015	Emmenstrand STV	8.55 ⁽⁴⁰⁾	8.70 ⁽³⁰⁾	8.50 ⁽⁴⁰⁾	8.60 ⁽²⁶⁾	8.20 ⁽³⁹⁾	42.55
40		Alves	Aaron	2012	Ballwil TV STV	8.40 ⁽⁴⁴⁾	8.25 ⁽⁴⁶⁾	8.85 ⁽²⁷⁾	8.15 ⁽⁵⁰⁾	8.85 ⁽¹⁴⁾	42.50
41		Brack	Maxim	2012	Luzern BTV STV	8.60 ⁽³⁴⁾	8.60 ⁽³⁵⁾	8.30 ⁽⁴⁶⁾	8.10 ⁽⁵¹⁾	8.85 ⁽¹⁴⁾	42.45
42		Spörri	Liam	2012	Eschenbach / LU ESV	8.60 ⁽³⁴⁾	8.25 ⁽⁴⁶⁾	8.50 ⁽⁴⁰⁾	8.55 ⁽³¹⁾	8.30 ⁽³⁴⁾	42.20
43		Willi	Lukas	2010	Ettiswil STV	8.20 ⁽⁴⁸⁾	8.50 ⁽⁴⁰⁾	8.55 ⁽³⁷⁾	8.25 ⁽⁴⁹⁾	8.40 ⁽³²⁾	41.90
43		Dastoli	Stefano	2014	Emmenstrand STV	8.80 ⁽²⁸⁾	8.25 ⁽⁴⁶⁾	8.45 ⁽⁴⁵⁾	8.40 ⁽⁴⁰⁾	8.00 ⁽⁴⁶⁾	41.90
45		Steiner	Timon	2013	Emmenstrand STV	8.20 ⁽⁴⁸⁾	8.55 ⁽³⁷⁾	8.60 ⁽³⁵⁾	8.45 ⁽³⁶⁾	8.05 ⁽⁴³⁾	41.85
46		Bigler	Florian	2013	Malters STV	8.45 ⁽⁴²⁾	8.20 ⁽⁵⁰⁾	8.50 ⁽⁴⁰⁾	8.35 ⁽⁴¹⁾	8.10 ⁽⁴²⁾	41.60
46		Knabenhans	Ronny	2012	Dagmersellen TV AKTIVE	8.35 ⁽⁴⁵⁾	9.00 ⁽¹⁴⁾	8.25 ⁽⁴⁸⁾	8.60 ⁽²⁶⁾	7.40 ⁽⁵³⁾	41.60
48		Blank	Lias	2013	Kerns TV STV	8.00 ⁽⁵²⁾	8.40 ⁽⁴¹⁾	8.75 ⁽³³⁾	8.30 ⁽⁴⁷⁾	8.05 ⁽⁴³⁾	41.50
49		Husistein	Damian	2010	Malters STV	8.50 ⁽⁴¹⁾	8.35 ⁽⁴³⁾	8.50 ⁽⁴⁰⁾	8.10 ⁽⁵¹⁾	8.00 ⁽⁴⁶⁾	41.45
50		Salierno	Vito	2013	Eschenbach / LU ESV	8.70 ⁽³²⁾	7.75 ⁽⁵²⁾	8.20 ⁽⁵¹⁾	8.35 ⁽⁴¹⁾	8.05 ⁽⁴³⁾	41.05
51		Schädler	Janis	2011	Eschenbach / LU ESV	8.15 ⁽⁵⁰⁾	7.70 ⁽⁵³⁾	8.85 ⁽²⁷⁾	8.45 ⁽³⁶⁾	7.80 ⁽⁵⁰⁾	40.95
52		Infanger	Andrin	2011	Ballwil TV STV	8.30 ⁽⁴⁶⁾	8.10 ⁽⁵¹⁾	7.90 ⁽⁵²⁾	8.35 ⁽⁴¹⁾	8.25 ⁽³⁷⁾	40.90
53		Kunz	Luis	2011	Malters STV	7.80 ⁽⁵³⁾	8.60 ⁽³⁵⁾	8.25 ⁽⁴⁸⁾	8.00 ⁽⁵³⁾	7.85 ⁽⁴⁸⁾	40.50

Hauptsponsor:

Kat. 4

(Total: 55 Turner)

Rang	Ausz Name	Vorname	JG Verein	Reck	Boden	Ring	Sprung	Barren	Total
1	☺ Zeder	Nevio	2011 Rickenbach TV STV	9.60 ⁽²⁾	9.25 ⁽¹⁴⁾	9.80 ⁽¹⁾	9.40 ⁽²⁾	9.60 ⁽¹⁾	47.65
2	☺ Roos	Nico	2009 Sursee TV STV	9.50 ⁽⁴⁾	9.55 ⁽²⁾	9.70 ⁽³⁾	9.40 ⁽²⁾	8.95 ⁽¹⁶⁾	47.10
3	☺ Baumgartner	Nael	2011 Samen STV	9.55 ⁽³⁾	9.50 ⁽⁴⁾	9.40 ⁽⁷⁾	9.10 ⁽⁷⁾	9.45 ⁽³⁾	47.00
4	☺ Zeder	Lean	2013 Rickenbach TV STV	9.45 ⁽⁷⁾	9.30 ⁽¹²⁾	9.80 ⁽¹⁾	9.00 ⁽¹²⁾	9.25 ⁽⁸⁾	46.80
5	☺ Wyss	Elias	2012 Rickenbach TV STV	9.30 ⁽¹⁰⁾	9.55 ⁽²⁾	9.10 ⁽²³⁾	9.35 ⁽⁴⁾	9.30 ⁽⁷⁾	46.60
6	☺ Jauch	Diego	2012 Rickenbach TV STV	9.20 ⁽¹³⁾	9.65 ⁽¹⁾	9.65 ⁽⁴⁾	8.80 ⁽¹⁷⁾	9.20 ⁽⁹⁾	46.50
7	☺ Dompert	Moritz	2013 Luzern BTV STV	9.50 ⁽⁴⁾	9.40 ⁽⁹⁾	8.95 ⁽²⁸⁾	8.80 ⁽¹⁷⁾	9.60 ⁽¹⁾	46.25
7	☺ Masciulli	Davide	2010 Littau TiV	9.15 ⁽¹⁶⁾	9.50 ⁽⁴⁾	9.30 ⁽¹⁴⁾	8.95 ⁽¹³⁾	9.35 ⁽⁶⁾	46.25
9	☺ Wilhelm	Jonas	2009 Triengen TV	9.35 ⁽⁹⁾	9.30 ⁽¹²⁾	9.35 ⁽¹⁰⁾	8.70 ⁽²²⁾	9.45 ⁽³⁾	46.15
10	☺ Kirchhofer	Flavio	2010 Büron TV STV	9.20 ⁽¹³⁾	9.00 ⁽²¹⁾	9.35 ⁽¹⁰⁾	9.25 ⁽⁶⁾	9.05 ⁽¹¹⁾	45.85
11	☺ Märchy	Fabio	2012 Rickenbach TV STV	9.65 ⁽¹⁾	8.30 ⁽⁴⁸⁾	9.55 ⁽⁵⁾	9.05 ⁽⁹⁾	9.00 ⁽¹⁵⁾	45.55
12	☺ Meier	Louis	2011 Grosswangen TV	9.10 ⁽¹⁷⁾	9.45 ⁽⁶⁾	9.00 ⁽²⁵⁾	8.45 ⁽⁴¹⁾	9.40 ⁽⁵⁾	45.40
13	☺ Ballmann	Lian	2011 Rickenbach TV STV	9.50 ⁽⁴⁾	9.35 ⁽¹¹⁾	8.80 ⁽³⁸⁾	8.65 ⁽²⁵⁾	9.05 ⁽¹¹⁾	45.35
14	☺ Schmid	Christoph	2011 Hitzkirch STV	8.95 ⁽²⁶⁾	9.45 ⁽⁶⁾	9.15 ⁽²²⁾	9.05 ⁽⁹⁾	8.35 ⁽³⁰⁾	44.95
15	☺ Grüter	Lyan	2009 Grosswangen TV	8.85 ⁽³²⁾	9.00 ⁽²¹⁾	9.20 ⁽¹⁷⁾	8.55 ⁽³⁰⁾	9.05 ⁽¹¹⁾	44.65
15	☺ Marbach	Levi	2009 Schötz TV	9.10 ⁽¹⁷⁾	8.85 ⁽³⁰⁾	9.20 ⁽¹⁷⁾	8.55 ⁽³⁰⁾	8.95 ⁽¹⁶⁾	44.65
17	☺ Fischer	Sebastian	2008 Triengen TV	9.05 ⁽¹⁹⁾	9.20 ⁽¹⁶⁾	9.30 ⁽¹⁴⁾	8.60 ⁽²⁶⁾	8.45 ⁽²⁷⁾	44.60
18	☺ Martin	Tiago	2011 Luzern BTV STV	9.25 ⁽¹¹⁾	9.05 ⁽²⁰⁾	9.00 ⁽²⁵⁾	8.90 ⁽¹⁴⁾	8.25 ⁽³³⁾	44.45
18	☺ Freimann	Elio	2011 Sursee TV STV	9.45 ⁽⁷⁾	8.95 ⁽²³⁾	8.90 ⁽³⁰⁾	8.55 ⁽³⁰⁾	8.60 ⁽²³⁾	44.45
18	☺ Bryan	Aiden	2009 Malters STV	8.45 ⁽⁴⁵⁾	9.25 ⁽¹⁴⁾	8.85 ⁽³³⁾	9.30 ⁽⁵⁾	8.60 ⁽²³⁾	44.45
21	☺ Jost	Lenny	2012 Rickenbach TV STV	9.20 ⁽¹³⁾	8.00 ⁽⁵¹⁾	9.40 ⁽⁷⁾	9.55 ⁽¹⁾	8.20 ⁽³⁵⁾	44.35
21	☺ Solenthaler	Livio	2010 Altbüron STV	8.90 ⁽²⁸⁾	9.45 ⁽⁶⁾	8.85 ⁽³³⁾	8.50 ⁽³⁶⁾	8.65 ⁽²²⁾	44.35
21	☺ Christen	Severin	2009 Schötz TV	9.00 ⁽²³⁾	8.90 ⁽²⁸⁾	9.40 ⁽⁷⁾	8.70 ⁽²²⁾	8.35 ⁽³⁰⁾	44.35
24	Owen	Nehemia	2009 Emmenstrand STV	9.05 ⁽¹⁹⁾	8.80 ⁽³²⁾	8.60 ⁽⁴³⁾	8.90 ⁽¹⁴⁾	8.90 ⁽¹⁸⁾	44.25
25	Bucher	Tim	2010 Büron TV STV	8.90 ⁽²⁸⁾	8.80 ⁽³²⁾	9.25 ⁽¹⁶⁾	8.55 ⁽³⁰⁾	8.70 ⁽²⁰⁾	44.20
26	Egger	Mauro	2010 Kerns TV STV	8.95 ⁽²⁶⁾	8.70 ⁽³⁷⁾	9.20 ⁽¹⁷⁾	8.00 ⁽⁵³⁾	9.15 ⁽¹⁰⁾	44.00
27	Widmer	Luca	2012 Hitzkirch STV	8.90 ⁽²⁸⁾	8.55 ⁽⁴²⁾	9.20 ⁽¹⁷⁾	8.80 ⁽¹⁷⁾	8.50 ⁽²⁵⁾	43.95
28	Booss	Mathieu	2010 Sursee TV STV	9.25 ⁽¹¹⁾	8.80 ⁽³²⁾	9.35 ⁽¹⁰⁾	8.35 ⁽⁴⁶⁾	8.15 ⁽³⁶⁾	43.90
29	Leuthold	Noel	2011 Luzern BTV STV	9.05 ⁽¹⁹⁾	8.40 ⁽⁴⁶⁾	8.85 ⁽³³⁾	8.50 ⁽³⁶⁾	9.05 ⁽¹¹⁾	43.85
30	Zahner	Elias	2012 Sarnen STV	8.75 ⁽³⁴⁾	8.95 ⁽²³⁾	9.35 ⁽¹⁰⁾	8.55 ⁽³⁰⁾	8.00 ⁽⁴⁰⁾	43.60
31	Dompert	Oskar	2013 Luzern BTV STV	8.65 ⁽³⁶⁾	9.40 ⁽⁹⁾	8.70 ⁽⁴⁰⁾	8.50 ⁽³⁶⁾	8.25 ⁽³³⁾	43.50
32	Wüest	Leon	2012 Ettiswil STV	8.70 ⁽³⁵⁾	9.20 ⁽¹⁶⁾	8.30 ⁽⁵⁰⁾	8.75 ⁽²¹⁾	8.40 ⁽²⁸⁾	43.35
33	Willi	Ben	2011 Ettiswil STV	8.60 ⁽³⁹⁾	8.95 ⁽²³⁾	8.85 ⁽³³⁾	8.40 ⁽⁴⁴⁾	8.50 ⁽²⁵⁾	43.30
34	Kirchhofer	Ben	2010 Büron TV STV	8.60 ⁽³⁹⁾	8.60 ⁽⁴⁰⁾	9.50 ⁽⁶⁾	9.10 ⁽⁷⁾	7.45 ⁽⁴⁷⁾	43.25
34	Studer	Livio	2010 Altbüron STV	8.60 ⁽³⁹⁾	8.80 ⁽³²⁾	8.65 ⁽⁴¹⁾	8.50 ⁽³⁶⁾	8.70 ⁽²⁰⁾	43.25
36	Arnold	Silas	2009 Emmenstrand STV	8.65 ⁽³⁶⁾	8.70 ⁽³⁷⁾	8.85 ⁽³³⁾	8.80 ⁽¹⁷⁾	8.15 ⁽³⁶⁾	43.15
37	Bösch	Livio	2011 Grosswangen TV	9.00 ⁽²³⁾	8.95 ⁽²³⁾	8.20 ⁽⁵²⁾	9.05 ⁽⁹⁾	7.90 ⁽⁴²⁾	43.10
38	Hauri	Ilay	2013 Kerns TV STV	9.00 ⁽²³⁾	8.15 ⁽⁵⁰⁾	9.20 ⁽¹⁷⁾	7.95 ⁽⁵⁵⁾	8.75 ⁽¹⁹⁾	43.05
39	Blum	Lenny	2011 Dagmersellen TV AKTIVE	8.90 ⁽²⁸⁾	9.10 ⁽¹⁹⁾	9.00 ⁽²⁵⁾	8.55 ⁽³⁰⁾	7.45 ⁽⁴⁷⁾	43.00
40	Von Ah	Andrin	2011 Kerns TV STV	8.60 ⁽³⁹⁾	8.65 ⁽³⁹⁾	9.10 ⁽²³⁾	8.20 ⁽⁴⁹⁾	8.40 ⁽²⁸⁾	42.95
41	Wiederkehr	Robin	2011 Grosswangen TV	9.05 ⁽¹⁹⁾	9.15 ⁽¹⁸⁾	8.45 ⁽⁴⁶⁾	8.50 ⁽³⁶⁾	7.70 ⁽⁴⁴⁾	42.85
42	Beck	Jason	2012 Hitzkirch STV	8.80 ⁽³³⁾	8.50 ⁽⁴⁴⁾	8.90 ⁽³⁰⁾	8.60 ⁽²⁶⁾	7.85 ⁽⁴³⁾	42.65
43	Caprez	Reto	2009 Buochs STV	8.65 ⁽³⁶⁾	8.60 ⁽⁴⁰⁾	8.95 ⁽²⁸⁾	8.15 ⁽⁵⁰⁾	8.15 ⁽³⁶⁾	42.50
44	Kostadinov	Nevio	2009 Altbüron STV	8.50 ⁽⁴⁴⁾	8.90 ⁽²⁸⁾	8.60 ⁽⁴³⁾	8.45 ⁽⁴¹⁾	8.00 ⁽⁴⁰⁾	42.45
45	Renggli	Olivier	2009 Schötz TV	8.45 ⁽⁴⁵⁾	8.85 ⁽³⁰⁾	8.90 ⁽³⁰⁾	8.60 ⁽²⁶⁾	7.55 ⁽⁴⁶⁾	42.35
46	Steffen	Nils	2011 Dagmersellen TV AKTIVE	8.55 ⁽⁴³⁾	8.95 ⁽²³⁾	8.25 ⁽⁵¹⁾	8.30 ⁽⁴⁸⁾	7.35 ⁽⁴⁹⁾	41.40
46	Graefe	Hannes	2012 Sarnen STV	8.10 ⁽⁵³⁾	8.20 ⁽⁴⁹⁾	8.75 ⁽³⁹⁾	8.00 ⁽⁵³⁾	8.35 ⁽³⁰⁾	41.40
48	Spichtig	Gian Andrin	2010 Buochs STV	7.85 ⁽⁵⁵⁾	8.80 ⁽³²⁾	8.05 ⁽⁵³⁾	8.40 ⁽⁴⁴⁾	8.10 ⁽³⁹⁾	41.20
49	Malinowski	Tobias	2011 Eschenbach / LU ESV	8.20 ⁽⁵⁰⁾	8.55 ⁽⁴²⁾	8.50 ⁽⁴⁵⁾	8.35 ⁽⁴⁶⁾	7.05 ⁽⁵¹⁾	40.65
50	Bösiger	Joel	2010 Altbüron STV	8.45 ⁽⁴⁵⁾	8.50 ⁽⁴⁴⁾	8.35 ⁽⁴⁹⁾	8.70 ⁽²²⁾	6.55 ⁽⁵⁴⁾	40.55
51	Vetter	Raphael	2010 Emmenstrand STV	8.20 ⁽⁵⁰⁾	7.75 ⁽⁵³⁾	8.45 ⁽⁴⁶⁾	8.60 ⁽²⁶⁾	7.30 ⁽⁵⁰⁾	40.30
52	Lauwerijzen	Nils	2011 Malters STV	7.90 ⁽⁵⁴⁾	8.35 ⁽⁴⁷⁾	8.65 ⁽⁴¹⁾	8.85 ⁽¹⁶⁾	6.00 ⁽⁵⁵⁾	39.75
53	Oetterli	Jan	2008 Eschenbach / LU ESV	8.15 ⁽⁵²⁾	8.00 ⁽⁵¹⁾	8.45 ⁽⁴⁶⁾	8.45 ⁽⁴¹⁾	6.65 ⁽⁵²⁾	39.70
54	Renggli	Lio	2010 Buochs STV	8.25 ⁽⁴⁸⁾	7.40 ⁽⁵⁴⁾	8.05 ⁽⁵³⁾	8.15 ⁽⁵⁰⁾	7.70 ⁽⁴⁴⁾	39.55
55	Engelberger	Nik	2010 Buochs STV	8.25 ⁽⁴⁸⁾	7.00 ⁽⁵⁵⁾	7.90 ⁽⁵⁵⁾	8.15 ⁽⁵⁰⁾	6.60 ⁽⁵³⁾	37.90

Hauptsponsor:

Kat. 4

(Total: 116 Turnerinnen)

Rang	Ausz	Name	Vorname	JG	Verein	Reck	Boden	Ring	Sprung	Total
1	☺	Galliker	Alessia	2010	Littau TiV	9.70 ⁽¹⁾	9.40 ⁽³⁾	9.50 ⁽¹⁾	9.30 ⁽²⁾	37.90
2	☺	Zbinden	Svenja	2013	Beromünster TV STV	9.60 ⁽²⁾	9.20 ⁽¹⁹⁾	9.25 ⁽¹¹⁾	9.15 ⁽⁶⁾	37.20
3	☺	Felix	Lena	2013	Beromünster TV STV	9.20 ⁽¹³⁾	9.15 ⁽²⁵⁾	9.30 ⁽¹⁰⁾	9.30 ⁽²⁾	36.95
3	☺	Schürch	Lorena	2011	Beromünster TV STV	9.20 ⁽¹³⁾	9.15 ⁽²⁵⁾	9.50 ⁽¹⁾	9.10 ⁽⁸⁾	36.95
5	☺	Breitenmoser	Louisa	2013	Luzern BTV STV	9.40 ⁽⁵⁾	9.20 ⁽¹⁹⁾	9.50 ⁽¹⁾	8.80 ⁽¹⁸⁾	36.90
5	☺	Rohrer	Amy	2014	Luzern BTV STV	9.00 ⁽³⁴⁾	9.65 ⁽¹⁾	9.00 ⁽³⁰⁾	9.25 ⁽⁴⁾	36.90
7	☺	Felix	Alina	2013	Beromünster TV STV	9.35 ⁽⁷⁾	9.40 ⁽³⁾	8.90 ⁽⁴²⁾	9.15 ⁽⁶⁾	36.80
8	☺	Jutzet	Mascha	2011	Luzern BTV STV	9.15 ⁽²³⁾	9.25 ⁽¹⁴⁾	9.40 ⁽⁵⁾	8.95 ⁽¹¹⁾	36.75
9	☺	Kuster	Jael	2009	Littau TiV	9.35 ⁽⁷⁾	9.35 ⁽⁵⁾	9.45 ⁽⁴⁾	8.45 ⁽⁴⁵⁾	36.60
10	☺	Gautschi	Lana	2012	Beromünster TV STV	9.30 ⁽⁹⁾	9.30 ⁽⁹⁾	8.95 ⁽³⁷⁾	8.75 ⁽²³⁾	36.30
11	☺	Blum	Valentina	2010	Roggliwil TV STV	9.15 ⁽²³⁾	8.80 ⁽⁶⁴⁾	9.05 ⁽²⁷⁾	9.20 ⁽⁵⁾	36.20
11	☺	Liefert	Jael	2010	Luzern BTV STV	9.00 ⁽³⁴⁾	9.35 ⁽⁵⁾	9.10 ⁽¹⁹⁾	8.75 ⁽²³⁾	36.20
13	☺	Schürch	Nora	2010	Eschenbach / LU ESV	9.40 ⁽⁵⁾	8.95 ⁽⁴²⁾	9.00 ⁽³⁰⁾	8.80 ⁽¹⁸⁾	36.15
13	☺	Sigrist	Mia	2013	Luzern BTV STV	9.20 ⁽¹³⁾	9.45 ⁽²⁾	9.15 ⁽¹⁶⁾	8.35 ⁽⁵²⁾	36.15
13	☺	Wicki	Amelie	2010	Littau TiV	8.65 ⁽⁶⁹⁾	9.25 ⁽¹⁴⁾	9.35 ⁽⁷⁾	8.90 ⁽¹⁵⁾	36.15
16	☺	Sager	Gioia	2010	Luzern BTV STV	9.15 ⁽²³⁾	9.25 ⁽¹⁴⁾	9.00 ⁽³⁰⁾	8.70 ⁽²⁶⁾	36.10
17	☺	Fahrenbach	Marie-Sophie	2009	Grosswangen TV	9.00 ⁽³⁴⁾	8.90 ⁽⁴⁶⁾	9.20 ⁽¹⁴⁾	8.95 ⁽¹¹⁾	36.05
17	☺	Blum	Sophie	2010	Roggliwil TV STV	8.85 ⁽⁵³⁾	9.05 ⁽³⁵⁾	8.70 ⁽⁵⁶⁾	9.45 ⁽¹⁾	36.05
17	☺	Marti	Julia	2011	Grosswangen TV	9.20 ⁽¹³⁾	9.00 ⁽⁴⁰⁾	8.90 ⁽⁴²⁾	8.95 ⁽¹¹⁾	36.05
17	☺	Meyer	Jael	2010	Grosswangen TV	9.00 ⁽³⁴⁾	9.05 ⁽³⁵⁾	9.05 ⁽²⁷⁾	8.95 ⁽¹¹⁾	36.05
17	☺	Selmani	Erina	2011	Littau TiV	9.20 ⁽¹³⁾	9.25 ⁽¹⁴⁾	9.40 ⁽⁵⁾	8.20 ⁽⁶²⁾	36.05
22	☺	Schöpfer	Elena	2011	Eschenbach / LU ESV	9.25 ⁽¹¹⁾	8.65 ⁽⁷⁵⁾	9.10 ⁽¹⁹⁾	8.75 ⁽²³⁾	35.75
22	☺	Pantic	Lia	2012	Beromünster TV STV	8.70 ⁽⁶⁵⁾	9.25 ⁽¹⁴⁾	9.00 ⁽³⁰⁾	8.80 ⁽¹⁸⁾	35.75
22	☺	Wyss	Cheyenne	2012	Luzern BTV STV	8.85 ⁽⁵³⁾	9.35 ⁽⁵⁾	9.25 ⁽¹¹⁾	8.30 ⁽⁵⁶⁾	35.75
22	☺	Zehnder	Sue	2011	Luzern BTV STV	8.20 ⁽⁹⁷⁾	9.35 ⁽⁵⁾	9.35 ⁽⁷⁾	8.85 ⁽¹⁶⁾	35.75
26	☺	Felder	Noelia	2011	Eschenbach / LU ESV	9.50 ⁽³⁾	8.80 ⁽⁶⁴⁾	8.80 ⁽⁴⁷⁾	8.60 ⁽³⁵⁾	35.70
26	☺	Heller	Elin	2011	Ettiswil STV	8.90 ⁽⁴⁸⁾	9.20 ⁽¹⁹⁾	8.95 ⁽³⁷⁾	8.65 ⁽³⁰⁾	35.70
26	☺	Fässler	Anina	2011	Büron TV STV	9.10 ⁽²⁷⁾	8.80 ⁽⁶⁴⁾	9.00 ⁽³⁰⁾	8.80 ⁽¹⁸⁾	35.70
26	☺	Arnold	Noelia	2010	Grosswangen TV	8.95 ⁽⁴⁴⁾	9.20 ⁽¹⁹⁾	8.90 ⁽⁴²⁾	8.65 ⁽³⁰⁾	35.70
30	☺	Bucher	Gianna	2012	Beromünster TV STV	8.75 ⁽⁶³⁾	9.10 ⁽³⁰⁾	9.35 ⁽⁷⁾	8.40 ⁽⁴⁹⁾	35.60
31	☺	Bättig	Ricarda	2011	Schötz TV	9.20 ⁽¹³⁾	8.85 ⁽⁵⁶⁾	8.75 ⁽⁵¹⁾	8.70 ⁽²⁶⁾	35.50
32	☺	Hirschi	Nora	2011	Grosswangen TV	8.90 ⁽⁴⁸⁾	9.15 ⁽²⁵⁾	8.70 ⁽⁵⁶⁾	8.70 ⁽²⁶⁾	35.45
33	☺	Emmenegger	Sarah	2010	Grosswangen TV	8.95 ⁽⁴⁴⁾	9.20 ⁽¹⁹⁾	9.10 ⁽¹⁹⁾	8.10 ⁽⁶⁷⁾	35.35
33	☺	Kjaer	Svea	2012	Willisau STV	9.00 ⁽³⁴⁾	8.95 ⁽⁴²⁾	8.35 ⁽⁸⁸⁾	9.05 ⁽⁹⁾	35.35
33	☺	Colle	Sofia	2010	Littau TiV	9.20 ⁽¹³⁾	8.95 ⁽⁴²⁾	8.95 ⁽³⁷⁾	8.25 ⁽⁵⁹⁾	35.35
36	☺	Moos	Jael	2008	Eschenbach / LU ESV	8.45 ⁽⁸⁵⁾	9.10 ⁽³⁰⁾	8.75 ⁽⁵¹⁾	9.00 ⁽¹⁰⁾	35.30
37	☺	Geiser	Alina	2010	Roggliwil TV STV	8.60 ⁽⁷²⁾	9.10 ⁽³⁰⁾	8.90 ⁽⁴²⁾	8.65 ⁽³⁰⁾	35.25
37	☺	Spengeler	Anja	2010	Schötz TV	8.85 ⁽⁵³⁾	8.90 ⁽⁴⁶⁾	8.95 ⁽³⁷⁾	8.55 ⁽³⁸⁾	35.25
37	☺	Tran	Sophie	2010	Ettiswil STV	8.65 ⁽⁶⁹⁾	9.20 ⁽¹⁹⁾	9.25 ⁽¹¹⁾	8.15 ⁽⁶⁴⁾	35.25
40	☺	Bachmann	Luana	2010	Luzern BTV STV	9.20 ⁽¹³⁾	9.30 ⁽⁹⁾	9.10 ⁽¹⁹⁾	7.55 ⁽¹⁰⁶⁾	35.15
41	☺	Weber	Yara	2010	Luzern BTV STV	8.25 ⁽⁹⁵⁾	9.05 ⁽³⁵⁾	9.10 ⁽¹⁹⁾	8.70 ⁽²⁶⁾	35.10
42	☺	Wyss	Mara	2011	Littau TiV	9.05 ⁽²⁹⁾	9.15 ⁽²⁵⁾	9.10 ⁽¹⁹⁾	7.75 ⁽⁹⁷⁾	35.05
42	☺	Müller	Lena	2011	Luzern BTV STV	9.05 ⁽²⁹⁾	9.30 ⁽⁹⁾	9.15 ⁽¹⁶⁾	7.55 ⁽¹⁰⁶⁾	35.05
44	☺	Scola	Mira	2008	Malters STV	8.90 ⁽⁴⁸⁾	8.60 ⁽⁸⁰⁾	9.00 ⁽³⁰⁾	8.50 ⁽⁴⁰⁾	35.00
45	☺	Grüter	Nayla	2011	Grosswangen TV	9.00 ⁽³⁴⁾	8.95 ⁽⁴²⁾	8.40 ⁽⁸⁵⁾	8.60 ⁽³⁵⁾	34.95
46	☺	Schöpfer	Marlen	2012	Beromünster TV STV	8.80 ⁽⁶²⁾	9.30 ⁽⁹⁾	8.50 ⁽⁷⁷⁾	8.25 ⁽⁵⁹⁾	34.85
47	☺	Graber	Jasmin	2010	Zell STV	8.70 ⁽⁶⁵⁾	8.85 ⁽⁵⁶⁾	8.40 ⁽⁸⁵⁾	8.85 ⁽¹⁶⁾	34.80
47	☺	Schürmann	Zoé	2011	Buchrain STV	8.90 ⁽⁴⁸⁾	9.15 ⁽²⁵⁾	8.70 ⁽⁵⁶⁾	8.05 ⁽⁶⁹⁾	34.80
47	☺	Bergmann	Sarina	2010	Malters STV	9.05 ⁽²⁹⁾	9.10 ⁽³⁰⁾	8.00 ⁽¹⁰²⁾	8.65 ⁽³⁰⁾	34.80
50	☺	Felix	Michelle	2008	Schötz TV	9.15 ⁽²³⁾	8.35 ⁽⁹⁶⁾	9.10 ⁽¹⁹⁾	8.15 ⁽⁶⁴⁾	34.75
50	☺	Vonwyl	Mirjam	2010	Ettiswil STV	9.10 ⁽²⁷⁾	9.05 ⁽³⁵⁾	8.65 ⁽⁶⁵⁾	7.95 ⁽⁸⁰⁾	34.75
52	☺	Straumann	Norina	2011	Altbüron STV	8.60 ⁽⁷²⁾	8.70 ⁽⁷¹⁾	8.90 ⁽⁴²⁾	8.50 ⁽⁴⁰⁾	34.70
53	☺	Limacher	Alicia	2009	Eschenbach / LU ESV	9.20 ⁽¹³⁾	8.70 ⁽⁷¹⁾	8.80 ⁽⁴⁷⁾	7.90 ⁽⁸⁸⁾	34.60
53	☺	Heller	Lea	2009	Schötz TV	9.00 ⁽³⁴⁾	8.85 ⁽⁵⁶⁾	8.25 ⁽⁹²⁾	8.50 ⁽⁴⁰⁾	34.60
53	☺	Hübscher	Lorena	2012	Hochdorf DR STV	9.30 ⁽⁹⁾	8.55 ⁽⁸⁹⁾	8.30 ⁽⁹⁰⁾	8.45 ⁽⁴⁵⁾	34.60
56	☺	Bartel	Aira	2012	Altbüron STV	9.00 ⁽³⁴⁾	8.55 ⁽⁸⁹⁾	8.65 ⁽⁶⁵⁾	8.35 ⁽⁵²⁾	34.55
56	☺	Kjaer	Romina	2012	Willisau STV	8.85 ⁽⁵³⁾	9.30 ⁽⁹⁾	8.00 ⁽¹⁰²⁾	8.40 ⁽⁴⁹⁾	34.55
56	☺	Lussi	Nadine	2011	Eschenbach / LU ESV	9.00 ⁽³⁴⁾	8.90 ⁽⁴⁶⁾	8.70 ⁽⁵⁶⁾	7.95 ⁽⁸⁰⁾	34.55
56	☺	Oetterli	Jael	2010	Eschenbach / LU ESV	8.95 ⁽⁴⁴⁾	8.60 ⁽⁸⁰⁾	8.50 ⁽⁷⁷⁾	8.50 ⁽⁴⁰⁾	34.55
56	☺	Grob	Lisa	2011	Schötz TV	9.25 ⁽¹¹⁾	8.85 ⁽⁵⁶⁾	8.65 ⁽⁶⁵⁾	7.80 ⁽⁹⁵⁾	34.55
61	☺	Isenschmid	Nella	2012	Willisau STV	9.45 ⁽⁴⁾	9.10 ⁽³⁰⁾	7.50 ⁽¹¹²⁾	8.40 ⁽⁴⁹⁾	34.45
62	☺	Kolak	Vanesa	2012	Buochs STV	8.60 ⁽⁷²⁾	8.65 ⁽⁷⁵⁾	9.15 ⁽¹⁶⁾	8.00 ⁽⁷⁵⁾	34.40

Kat. 4

(Total: 116 Turnerinnen)

Rang	Ausz Name	Vorname	JG Verein	Reck	Boden	Ring	Sprung	Total
63	Schlöter	Alena	2011 Hochdorf DR STV	9.05 (29)	8.70 (71)	8.30 (90)	8.30 (56)	34.35
63	Kramis	Lena	2010 Buchrain STV	8.85 (53)	8.60 (80)	8.70 (56)	8.20 (62)	34.35
63	Jaeggi	Malina	2010 Altbüron STV	8.70 (65)	8.85 (56)	8.80 (47)	8.00 (75)	34.35
66	Knüsel	Leona	2011 Grosswangen TV	9.00 (34)	8.60 (80)	8.60 (70)	8.10 (67)	34.30
67	Heller	Jael	2011 Schötz TV	8.55 (79)	8.90 (46)	8.75 (51)	8.05 (69)	34.25
68	Giger	Livia	2009 Zell STV	8.65 (69)	9.00 (40)	8.50 (77)	8.05 (69)	34.20
68	Hegi	Zoé	2009 Zell STV	8.55 (79)	9.05 (35)	8.00 (102)	8.60 (35)	34.20
68	Schwegler	Selina	2008 Malters STV	7.95 (105)	8.75 (69)	9.00 (30)	8.50 (40)	34.20
71	Ziswiler	Lara	2012 Eschenbach / LU ESV	8.60 (72)	8.90 (46)	8.70 (56)	7.95 (80)	34.15
71	Meyer	Simona	2010 Grosswangen TV	8.40 (88)	8.90 (46)	8.50 (77)	8.35 (52)	34.15
73	Burri	Lara	2009 Malters STV	8.85 (53)	8.55 (89)	8.65 (65)	8.00 (75)	34.05
73	Rab	Vivien	2008 Malters STV	8.75 (63)	8.05 (104)	9.20 (14)	8.05 (69)	34.05
75	Wiederkehr	Gianna	2010 Grosswangen TV	9.05 (29)	8.85 (56)	8.20 (97)	7.90 (88)	34.00
75	Staub	Norina	2011 Dagmersellen TV AKTIVE	8.90 (48)	8.85 (56)	8.60 (70)	7.65 (102)	34.00
77	Zihlmann	Laura	2009 Zell STV	8.45 (85)	8.90 (46)	8.65 (65)	7.95 (80)	33.95
78	Stirmimann	Malina	2012 Buchrain STV	8.85 (53)	8.65 (75)	8.10 (101)	8.30 (56)	33.90
78	Popek	Zuzanna	2009 Triengen TV	8.85 (53)	8.65 (75)	8.45 (83)	7.95 (80)	33.90
80	Erni	Nina	2010 Zell STV	8.55 (79)	8.90 (46)	8.40 (85)	8.00 (75)	33.85
80	Zimmerli	Kaya	2012 Buochs STV	8.20 (97)	7.95 (109)	9.05 (27)	8.65 (30)	33.85
82	Gjugja	Melanie	2009 Zell STV	8.60 (72)	8.85 (56)	8.35 (88)	7.95 (80)	33.75
82	Weil	Amélie	2010 Ettiswil STV	7.80 (110)	8.80 (64)	8.60 (70)	8.55 (38)	33.75
82	Koffel	Leelavadee	2010 Altbüron STV	9.20 (13)	8.20 (102)	8.70 (56)	7.65 (102)	33.75
85	Pfulg	Yara	2012 Büron TV STV	8.20 (97)	8.60 (80)	8.50 (77)	8.35 (52)	33.65
86	Schaller	Laura	2011 Schötz TV	8.40 (88)	8.65 (75)	7.75 (110)	8.80 (18)	33.60
86	Kanebog	Enya	2009 Buchrain STV	8.85 (53)	8.35 (96)	8.55 (75)	7.85 (93)	33.60
86	Hauri	Zoe	2012 Büron TV STV	8.10 (103)	8.70 (71)	8.75 (51)	8.05 (69)	33.60
89	Palushi	Melissa	2011 Hochdorf DR STV	8.45 (85)	8.60 (80)	8.50 (77)	7.90 (88)	33.45
90	Stadelmann	Emilia	2013 Willisau STV	8.50 (84)	8.60 (80)	8.60 (70)	7.70 (99)	33.40
91	Schwegler	Anina	2010 Ettiswil STV	7.40 (114)	8.90 (46)	8.60 (70)	8.45 (45)	33.35
92	Looser	Fina	2011 Roggliswil TV STV	8.60 (72)	8.30 (100)	8.80 (47)	7.60 (104)	33.30
92	Dittli	Leila-Lou	2009 Buchrain STV	8.55 (79)	8.10 (103)	8.75 (51)	7.90 (88)	33.30
94	Graber	Valerie	2010 Grosswangen TV	8.70 (65)	8.35 (96)	8.70 (56)	7.50 (109)	33.25
95	Marbach	Lenya	2011 Schötz TV	8.95 (44)	7.45 (113)	8.95 (37)	7.75 (97)	33.10
95	Lang	Nicole	2011 Hochdorf DR STV	8.55 (79)	8.35 (96)	8.15 (99)	8.05 (69)	33.10
97	Jäggi	Fiona	2009 Buchrain STV	8.20 (97)	8.45 (93)	8.45 (83)	7.95 (80)	33.05
98	Müller	Leana	2012 Büron TV STV	8.40 (88)	8.05 (104)	8.25 (92)	8.25 (59)	32.95
99	Arnold	Yara	2009 Ettiswil STV	8.20 (97)	8.75 (69)	8.25 (92)	7.50 (109)	32.70
99	Bachmann	Olivia	2009 Malters STV	6.70 (116)	8.90 (46)	9.10 (19)	8.00 (75)	32.70
101	Widmer	Romina	2011 Hochdorf DR STV	8.60 (72)	8.00 (107)	8.25 (92)	7.70 (99)	32.55
101	Jung	Louisa	2012 Eschenbach / LU ESV	8.30 (93)	7.95 (109)	8.70 (56)	7.60 (104)	32.55
103	Heiniger	Nina	2009 Zell STV	7.65 (112)	8.50 (92)	8.20 (97)	7.95 (80)	32.30
104	Willimann	Lynn	2009 Schötz TV	8.35 (91)	7.45 (113)	8.00 (102)	8.45 (45)	32.25
105	Tello	Ranya	2011 Hochdorf DR STV	8.20 (97)	8.30 (100)	8.25 (92)	7.40 (111)	32.15
106	Wermelinger	Jaelle	2011 Willisau STV	7.90 (107)	8.45 (93)	7.85 (108)	7.85 (93)	32.05
107	Stocker	Shayenne	2011 Ettiswil STV	7.95 (105)	8.80 (64)	8.55 (75)	6.65 (115)	31.95
108	Feusi	Elin	2011 Hochdorf DR STV	8.30 (93)	7.80 (111)	7.45 (114)	8.15 (64)	31.70
109	Balmer	Laura	2009 Buchrain STV	7.90 (107)	8.05 (104)	7.80 (109)	7.90 (88)	31.65
110	Baumgartner	Jana	2011 Büron TV STV	8.00 (104)	8.60 (80)	8.15 (99)	6.85 (113)	31.60
111	Brühlmann	Alina	2008 Ettiswil STV	7.00 (115)	8.60 (80)	8.00 (102)	7.80 (95)	31.40
112	Mehr	Lia	2011 Willisau STV	8.35 (91)	7.30 (115)	7.70 (111)	7.70 (99)	31.05
113	Shala	Linda	2009 Zell STV	7.45 (113)	8.40 (95)	7.50 (112)	7.55 (106)	30.90
114	Aregger	Alissa	2011 Willisau STV	8.25 (95)	8.00 (107)	7.40 (115)	6.75 (114)	30.40
115	Hadzidedic	Sara	2011 Willisau STV	7.80 (110)	6.60 (116)	7.10 (116)	7.20 (112)	28.70
116	Meier	Mara	2012 Willisau STV	7.85 (109)	7.80 (111)	7.90 (107)	0.00 (116)	23.55